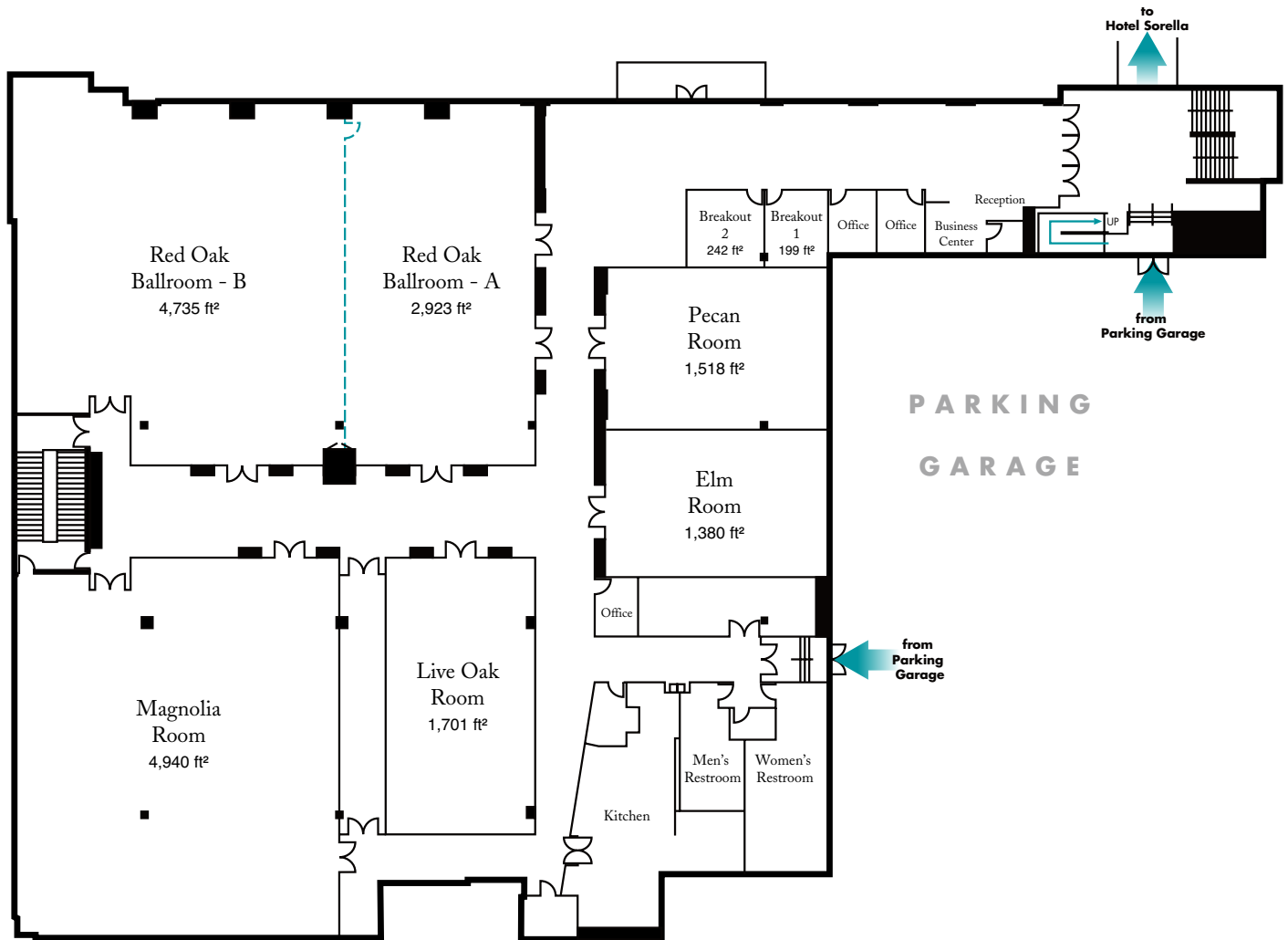




SPACE CONFIGURATION - HOUSTON/CITYCENTRE



| Houston/CC | Sq. Ft. | Room Dimensions | Theatre | Classroom | Rounds 60" 8 per | Rounds 72" 10 per | Semi Circle 5 per | U-Shape |
|------------------------|---------|-----------------|---------|-----------|---------------------|----------------------|----------------------|---------|
| Red Oak Ballroom - A-B | 7,658 | 106 x 74 | 638 | 382 | 448 | 430 | 280 | 120 |
| Red Oak Ballroom - A | 2,923 | 40 x 74 | 244 | 146 | 168 | 160 | 105 | 60 |
| Red Oak Ballroom - B | 4,735 | 66 x 70 | 395 | 236 | 280 | 260 | 175 | 98 |
| Pecan | 1,518 | 46 x 33 | 110 | 70 | 80 | 50 | 50 | 28 |
| Live Oak | 1,701 | 30 x 56 | 142 | 86 | 104 | 90 | 65 | 36 |
| Magnolia | 4,940 | 76 x 65 | 412 | 248 | 288 | 270 | 180 | 102 |
| Elm | 1,380 | 46 x 30 | 100 | 60 | 70 | 50 | 50 | 24 |