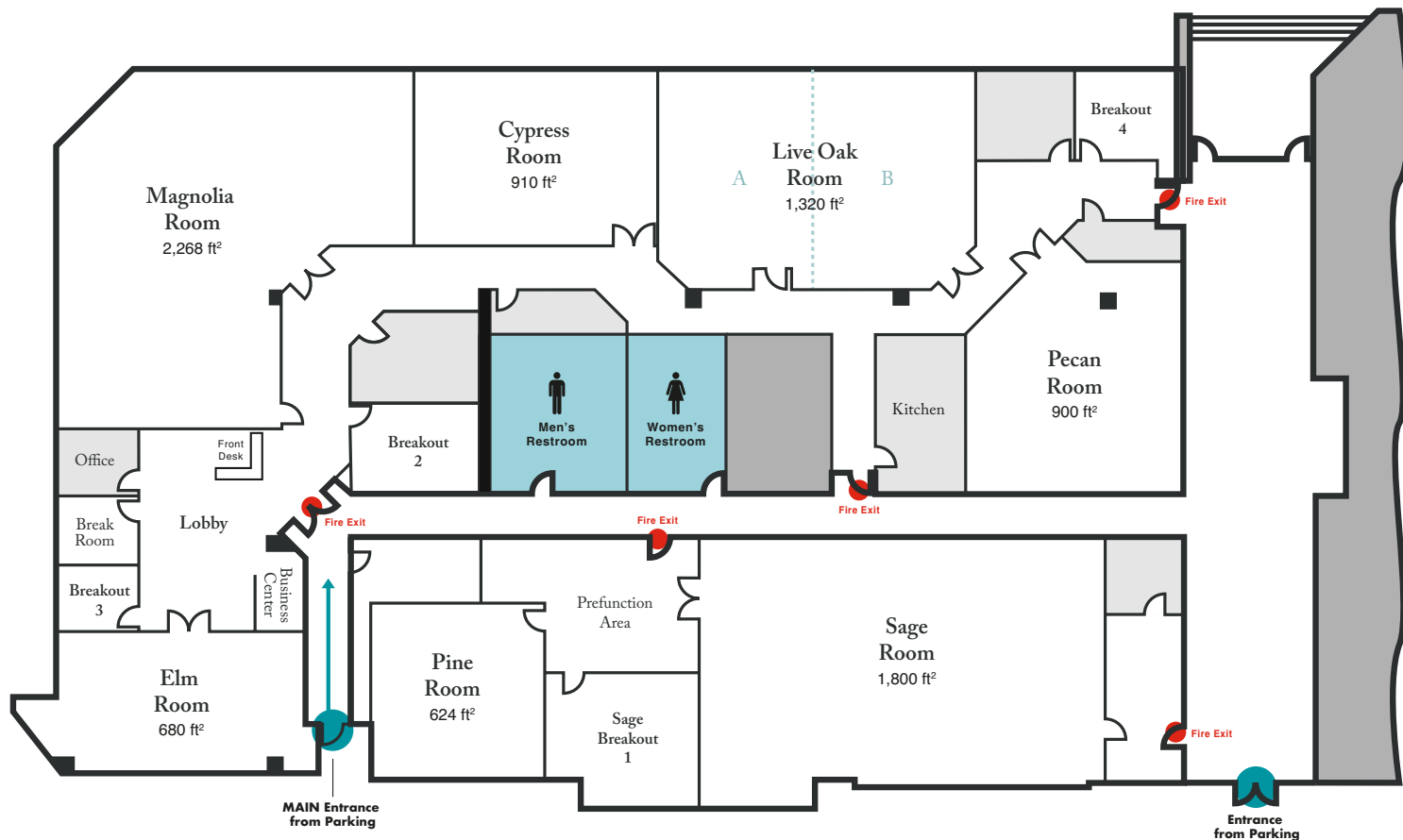




# SPACE CONFIGURATION - HOUSTON/WESTCHASE



Houston/Westchase	Sq. Ft.	Room Dimensions	Theatre	Classroom	Rounds 60" 8 per	Rounds 72" 10 per	Semi Circle 5 per	U-Shape
Elm	680	20 x 34	40	10	24	20	15	10
Magnolia	2,268	42 x 54	200	80	136	100	85	44
Cypress	910	26 x 35	40	18	16	20	10	16
Live Oak	1,320	30 x 44	110	44	80	90	50	30
Live Oak - A	600	30 x 20	24	14	16	20	10	14
Live Oak - B	720	30 x 24	34	20	16	20	10	18
Pecan	900	30 x 30	24	14	16	20	10	14
Sage	1,800	30 x 60	180	70	64	100	50	34
Pine	624	24 x 26	32	18	16	20	10	16
Breakout - 1	288	16 x 18	16	8	8	10	5	10
Breakout - 2	216	12 x 18	12	8	8	10	5	6
Breakout - 3	120	10 x 12	8	8	8	-	5	-
Breakout - 4	121	11 x 11	8	8	8	-	5	-

NOTE: All seating capacity numbers have been derived from MPI formula standards for spacing. Additional room sets and subsequent occupancies are available. Simply call or email with questions. The use of staging, bars, dance floors, etc., may lower total occupancies.